

# DISASTER SUPPLY KIT

**Water** – at least one gallon daily per person for 3 days

**Food** – at least enough for 3 days

- Non-perishable packaged or canned food/juices
- Food for infants or the elderly
- Snack foods
- Non-electric can opener
- Cooking tools/fuel
- Paper plates/plastic utensils

**Clothing** – seasonal / rain gear / sturdy shoes

**Blankets / Pillows, etc.**

**First Aid Kit / Medicines**

- Prescription and non-prescription medications
- Glasses, dentures, hearing aids, etc.

**Special Items** – for babies and elderly

**Toiletries** – Hygiene items

**Moisture wipes**

**Flashlight / Batteries**

**Radio** – Battery operated and NOAA Weather Radio

**Cash**

**Keys** – Extra set of home and car keys

**Important Documents – in a waterproof container**

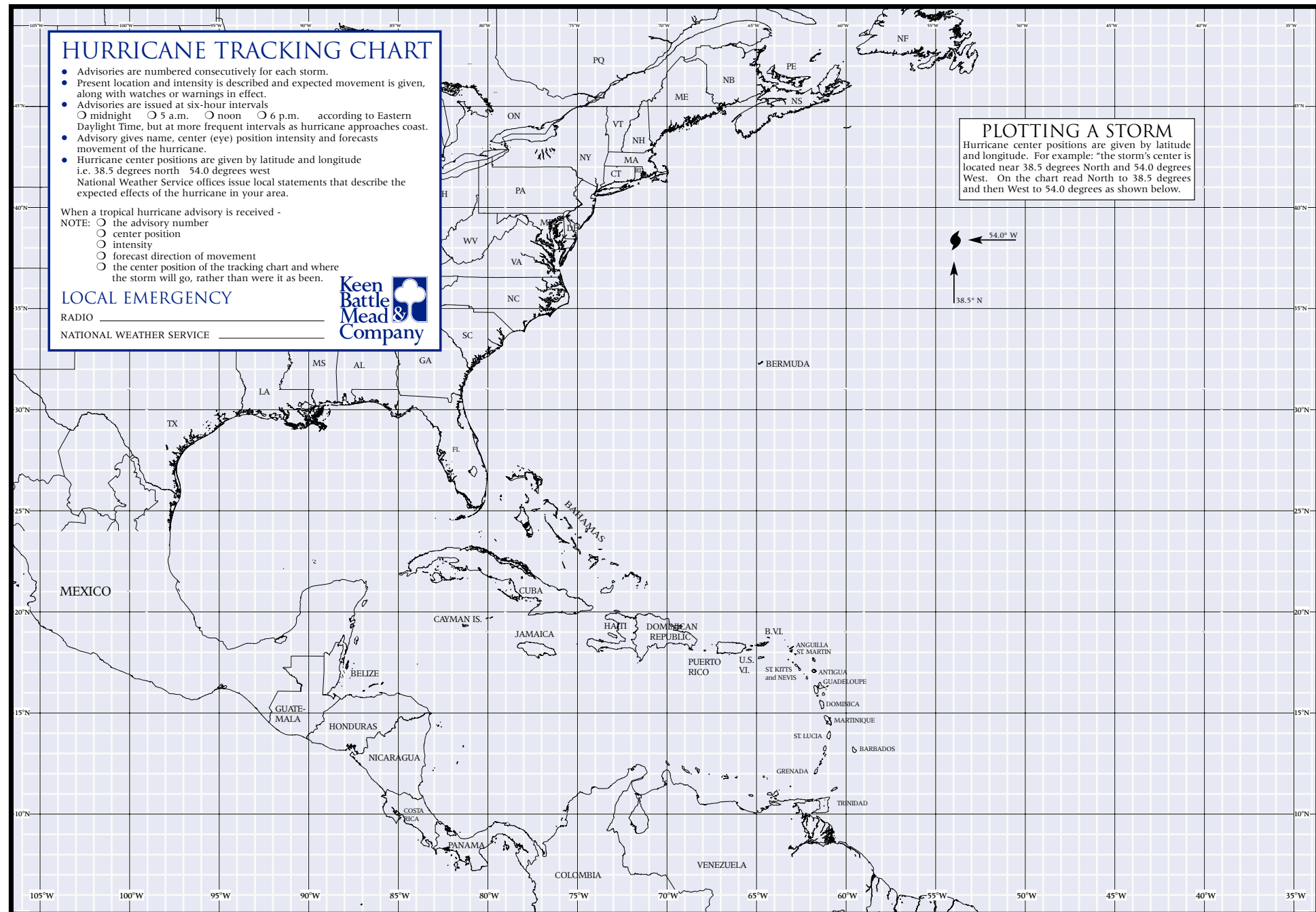
- Insurance, medical records, bank account numbers, Social Security card, etc.
- Document all valuables

**Toys / Books / Entertainment**

**Tools** – Keep a set with you during the storm

**Pet care items**

- Proper identification / immunization records
- Ample supply of food and water
- Carrier or cage
- Medications
- Muzzle and leash



## FAMILY PREPAREDNESS TIPS FOR STAYING HOME DURING A HURRICANE

- **Develop a family disaster plan**
- **Stay alert to storm advisories**  
WATCH and WARNING – Know the difference.
- **Purchase a NOAA weather radio**
- **Keep a Disaster Supply Kit ready**
- **Have enough food and water for at least three days**
- **Protect valuable documents**
- **Make your home more disaster resistant**  
Prepare to board up windows and glass doors, anchor loose yard objects or bring them inside.
- **Get cash**  
Following a hurricane, banks and ATMs may be temporarily closed.
- **Fill your car with fuel**
- **Have a pet plan**  
Before a storm threatens, contact your veterinarian or local humane society for information on preparing your pets for an emergency.
- **Do not use candles or open flames as a light source.**
- **Work with your neighbors**  
Check on elderly or those with special needs.
- **As the storm hits, gather your family in a safe room** (an interior room with no windows).
- **Following the storm, watch out for downed power lines**
- **Listen to your local officials!**

## AFTER THE STORM

- **Listen** to local officials for advice.
- **Drive** carefully, watching for downed electric wires, flooded low spots and undermined roads.
- **Report** broken or damaged water, sewer and electrical lines.
- **Cautiously** re-enter your home (if you've left). Check for gas leaks, food spoilage and water damage.
- **Protect** your premises from further loss.



M I A M I L A K E S

3 0 5 . 5 5 8 . 1 1 0 1

B O C A R A T O N

5 6 1 . 4 8 7 . 7 4 6 6

N A P L E S

9 4 1 . 2 6 1 . 4 3 4 2

O C E A N R E E F

3 0 5 . 3 6 7 . 2 7 7 7

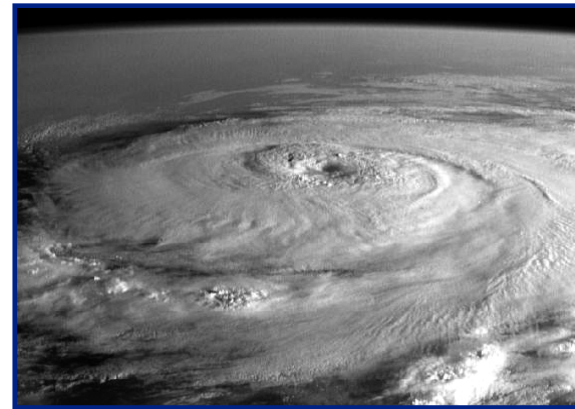
V E R O B E A C H

5 6 1 . 2 3 1 . 2 4 2 1

SAFETY TIPS FOR SEVERE WEATHER

## WHAT TO DO

# BEFORE, DURING & AFTER A HURRICANE



## FAMILY PREPAREDNESS TIPS FOR EVACUATING DURING A HURRICANE

- **Stay alert to storm advisories**  
WATCH and WARNING – know the difference.
  - **Enact your family disaster plan**
  - **Map out your route**  
Use travel routes specified by local authorities. DO NOT get on the road without a place to go.
  - **Fill your car with fuel**
  - **Evacuate if told to do so**  
DO NOT get stranded. EVACUATE EARLY
  - **Enact your pet plan**  
Before a storm threatens, contact your veterinarian or local humane society for information on preparing your pets for an emergency.
  - **Bring your disaster supply kit**  
Including important documents.
  - **Secure your home before leaving**  
Board up windows and glass doors, anchor loose yard objects or bring them inside and lock your doors.
  - **Get cash**  
Following a hurricane, banks and ATMs may be temporarily closed.
  - **Notify family and friends of your plans**
  - **When evacuating:**  
If possible, evacuate to the home of either friends or family in a non-vulnerable area within your county. Next try a motel or hotel and as a last resort, go to a shelter. Remember, shelters are not designed for comfort and do not usually accept pets.
- People who require special assistance in evacuating should register with their local emergency management office.**